



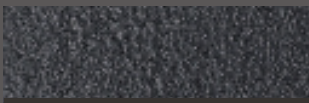
# Highway Maintenance

## Safetrack® SC Colour Chart

### ***safetrack® sc*** **COLOUR CHART**

Standard colour finishes for the Safetrack® SC system are shown below. Bespoke colours can also be produced following consultation with Stirling Lloyd's Customer Service Department.

#### **STOCK COLOURS**



**ASPHALT GREY**



**BLACK**



**CAPRI BLUE**

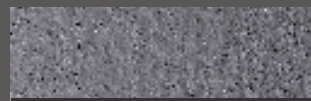


**CHROME GREEN**

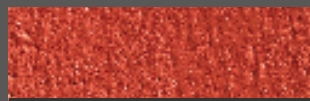
#### **NON-STOCK COLOURS**



**LILAC**



**MID GREY**



**ROAD RED**



**YELLOW GREEN**

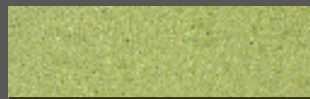
#### **SPECIAL COLOURS**



**LEMON**



**PASTEL ORANGE**



**PALE GREEN**



**SIGNAL BLUE**



**SIGNAL VIOLET**



**SKY BLUE**



**TRAFFIC RED**



**TRAFFIC YELLOW**

NOTE: All colours are as close as colour matching and printing process allows. Samples of the Safetrack SC system are also available from Stirling Lloyd Customer Services.

Ref. PIA\_Safe010(7P).pdf  
Available from [stirlinglloyd.com](http://stirlinglloyd.com)



#### **STIRLING LLOYD UK & WORLD WIDE**

Stirling Lloyd Polychem Ltd.  
Union Bank . King Street . Knutsford  
Cheshire . WA16 6EF . UK  
Tel: +44 (0) 1565 633111  
Fax: +44 (0) 1565 633555  
Email: [marketing@stirlinglloyd.com](mailto:marketing@stirlinglloyd.com)

#### **STIRLING LLOYD NORTH AMERICA**

[www.northamerica.stirlinglloyd.com](http://www.northamerica.stirlinglloyd.com)  
The information contained in this literature is accurate to the best of the publisher's knowledge and we reserve the right to alter any of the details contained herein without notice. It must not be taken in any way to form a specification and Stirling Lloyd accepts no liability whatsoever arising out of the use of the information contained herein. This documentation does not form part of the 'Conditions of Sale' of our products.



**THE TECHNOLOGY OF PROTECTION**

[www.stirlinglloyd.com](http://www.stirlinglloyd.com)